

# DIACOM<sup>®</sup> Marine



Diacom supports MerCruiser, Mercury Outboards, Volvo Penta, Indmar, Pleasurecraft Marine, Crusader, Ilmor, Marine Power, Kodiak, Flagship Marine, GM RamJet Engines and more...

The Diacom PC based diagnostic system gives you the power and flexibility you need to troubleshoot today's advanced marine EFI systems. Diacom Marine supports the broadest range of engines in the industry providing superior coverage in a single diagnostic tool. Harness the power of your Windows based notebook or netbook PC to diagnose EFI system problems quickly and accurately.



- **Productivity equals profitability.**

Leverage the computing strength of industry standard notebook PCs to diagnose EFI faults in less time.

- **Stay compatible and competitive.**

Easily access CD based service information, exchange engine data over the Internet, free yourself from dedicated diagnostic tools and take advantage of the latest notebook PC technology.

### PC Diagnostic Power

Diacom Marine is a powerful Windows based diagnostic tool that is revolutionizing marine engine service. With advanced engine control systems now standard on nearly all gasoline inboard, sterndrive and outboard engines, you need a service tool that pinpoints problems quickly and accurately. Diacom unlocks the power of your notebook or netbook PC and provides state-of-the-art features that simply leave other diagnostic tools in it's wake.

### You Spoke, We Listened

We started with a blank screen and designed Diacom Marine from the ground up with your feedback and suggestions in mind. After all, who knows better than you when it comes to getting your job done? Over the past decade we've collected a wealth of knowledge from the marine service technicians and dealerships we support. This gave our engineers quite a wish list of features to consider. Thanks to your input, Diacom has been made more

intuitive, more streamlined, and more discoverable, so you can complete all of your work in less time.

### Internet Connectivity

Chances are the Internet has already changed the way you interact with your customers and suppliers. Now it will change the way you troubleshoot. Diacom was designed to be Internet "aware" and provides features that allow the easy Diacom Kit Configuration exchange of data with other parties. Diacom can also convert engine data into formats easily read by other popular PC programs such as Microsoft Excel and Access.

### Big Screen, Huge Advantage

Notebook screens have never been bigger and brighter. Diacom takes full advantage of your PC's expansive display and shows you the "Big Picture" of what's happening. Now you can spend less time pressing scanner buttons, scrolling through lists of parameters,

## System requirements

To use Diacom, you need:

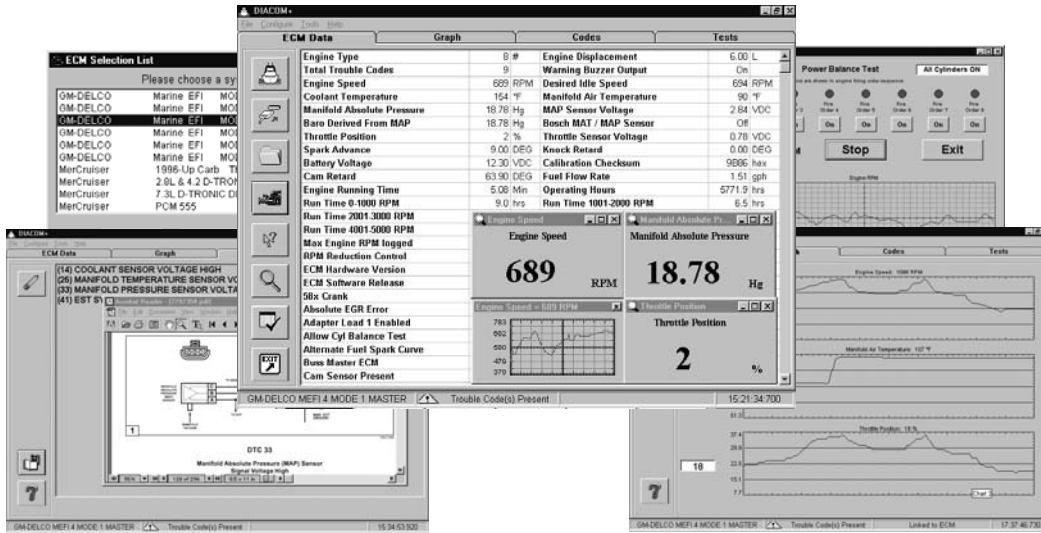
- Notebook or Netbook PC with 1 Ghz or higher processor
- Microsoft Windows 7, Windows Vista, Windows XP (both 32bit and 64bit versions of Win 7 / Vista are supported)
- 512 MB of RAM minimum
- 150 MB or greater of available hard disk space.
- CD-ROM drive
- USB port.
- SVGA (800 x 600) or higher resolution display screen.
- Mouse, touchpad, or compatible pointing device.

Additional items or services required to use certain features:

- Internet connection for email and web related features.
- Appropriate document viewing utilities such as Adobe Acrobat and Microsoft Internet Explorer to view electronic service information.
- Diacom special functions require usage authorization and data files supplied by engine manufacturers.

1. Engine service manuals in electronic format must be obtained from the engine and/or vehicle manufacturers.
2. Usage restrictions apply based upon dealer type and status. Diacom special functions vary with EFI system type and engine manufacturer.

*Please note all specifications are subject to change without notice. Photos and screen images shown may differ based upon product version or other factors. Information presented in this document is believed to be accurate. Responsibility for errors, omission of information or results from the use of this information cannot be assumed by Rinda Technologies, Inc.*



and more time seeing what your EFI numbers mean. Diacom's data display can be easily customized allowing you to view each EFI system type in a way that best suits your taste. Throw in features such as side-by-side twin engine displays, instant pop-up graphs, enlarged parameter windows, extensive data recording capabilities, report printing, and you'll see why more marine technicians are choosing Diacom than ever before.

## The Electronic Information Age

All of those years of searching through stacks of service manuals and technical bulletins are finally coming to a close. Most manufacturer's now provide engine service information on CDs which can be easily searched and updated. Diacom has been designed to seamlessly access this information, displaying it effortlessly and accurately when you need it most. Simply click on any trouble code in Diacom's display screen to launch the service information feature<sup>1</sup>.

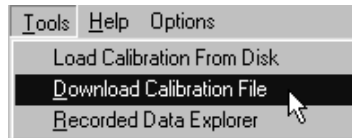
## Tests Made to Order

The marine industry's ever increasing variety of EFI systems unfortunately means that tests designed for one type of engine control system probably won't apply to other systems. Diacom's adaptable "Tests" screen is designed to automatically configure itself for the EFI system under investigation. Using Windows ActiveX programming technology, this feature simplifies your work by displaying and delivering the unique set of tests that apply to the particular system you are troubleshooting.

Diacom is a registered trademark of Rinda Technologies, Inc. All other brand names are trademarks of their respective holders. Copyright © 2014 Rinda Technologies, Inc.

## Special Functions

As a factory authorized dealership you know the value of having the latest service technology at your fingertips. Working closely with marine engine manufacturers, we have incorporated specialized EFI system functions<sup>2</sup> into Diacom Marine. Now factory authorized service facilities can use a single integrated diagnostic program to not only troubleshoot but also perform system upgrades and memory



updates electronically in just minutes. ECM exchanges can now be minimized and in most cases entirely eliminated.

## For More Information

To obtain a comprehensive list of features and information about Diacom Marine as well as other Rinda Technologies products, please visit our website at [www.rinda.com](http://www.rinda.com). Product specialists can also be reached in the USA and Canada by calling 773-736-6633.

## Diacom Kit Configurations

**94010 - Diacom Marine:** includes Diacom CD, USB cable, #94005 MEFI and #94006 PCM-555 adapters.

**94030 - Diacom Marine + CAN:** includes Diacom CD, USB cable, #94005 MEFI and #94006 PCM-555 and 94029 CAN network adapters.

# DIACOM® Marine

## Engine Diagnostic Adapter Reference

### Mercury Outboards

- **2006 - Up Verado:**  
All models: Adapter #94006
- **2002 - Up 4-stroke EFI:**  
25hp, 30hp (Tohatsu EFI) Adapter #94039  
40hp, 50hp, 60hp, (ECM-555) (2002-05) Adapter #94028  
40hp, 50hp, 60hp, (ECM-555) (2006-09) Adapter #94006  
75hp, 90hp, 115hp (Yamaha EFI) Adapter #94038  
75hp, 90hp, 115hp (ECM-555 EFI) Adapter #94006
- Note:** 2010 and newer Mercury outboards equipped with ECM-70 control modules are not supported, these include 2010-Up 40, 50, 60HP, 2012-Up 150HP (non-Verado) and 2014-Up 75, 90, 115HP.
- **1998 - Up 4-stroke carbureted:**  
25hp, 30hp, 40hp, 50hp, 60hp Adapter #94011 + #94037
- **2001 - Up Optimax:**  
2001 thru approx 2006 Adapter #94028  
2007 - Up Adapter #94006
- **1998 - 2000 DFI:**  
All models Adapter #94028
- **1994 - Up 2-stroke EFI:**  
1994 - Up 150hp, 175hp, 200hp, 225hp Adapter #94028  
1994 - 1999 225hp(3.0L) Adapter #94011
- **1994 - 1999 2-stroke carbureted:**  
225hp/(3.0L) Adapter #94011
- **1995-Up Racing 2-stroke EFI:**  
150hp, 200hp, 225hp, 2.5L, 280hp, 300hp, Optimax XS series Contact Us

### MerCruiser

- **1992 - Up EFI engines:**  
1992 thru 2000 (GM MEFI-1 thru MEFI-4) Adapter #94005  
2001 - Up (PCM-555 / ECM-555) Adapter #94006  
2008 - Up (PCM-09 catalyst equipped) Adapter #94023 or #94029
- **1996-up Carbureted engines with Thunderbolt V ignition:**  
All models Adapter #94020

### MerCruiser D-Tronic Diesels

- **1997 - 2007**  
2.8L 4-cylinder, 4.2L 6-cylinder Adapter #94014
- **1997 - 2005**  
7.3L V8 Adapter #94021

### Mercury Racing (sterndrives)

- **1998 - Up EFI engines:**  
1998 - Up HP500 GM MEFI equipped Adapter #94005  
All other 2001-up PCM-555 equipped Adapter #94006

### Volvo Penta

- **1992 - Up Gasoline EFI engines:**  
1992 - 2005 (GM MEFI-1 thru MEFI-4) Adapter #94005  
2006 - 2007 (EGC) Adapter #94024  
2008 - Up (EGC) Adapter #94023 or 94029

### Crusader

- **1992 - Up EFI engines:**  
1992 - 2006 (GM MEFI equipped) Adapter #94005  
2007 - 2009 (ECM-07 equipped) Adapter #94026  
2008 - Up (ECM-08 equipped) Adapter #94023 or 94029

### Flagship Marine

- **1992 - Up GM EFI engines:**  
GM MEFI-1 thru MEFI-4 equipped Adapter #94005  
GM MEFI-5, MEFI-6 Adapter #94023 or #94029

### Ilmor Marine Engines

- **2009 - Up V10 engines:**  
MV-650, MV-725 Adapter #94023 or #94029
- **2010-Up V8 engines:**  
All models Adapter #94023 or #94029

### Indmar

- **1992 - Up EFI engines:**  
1992 - 2006 (GM MEFI-1 thru MEFI-4) Adapter #94005  
2007-Up All models Adapter #94023 or #94029

### Kodiak Marine

- **1992 - Up GM EFI engines:**  
1992 - 2008 (GM MEFI-1 thru MEFI-4) Adapter #94005  
2008-Up (GM MEFI-5, MEFI-6) Adapter #94023 or #94029

### Marine Power

- **1992 - Up GM EFI engines:**  
1992 - 2008 (GM MEFI-1 thru MEFI-4) Adapter #94005  
2008-Up (GM MEFI-5, MEFI-6) Adapter #94023 or #94029

### Panther Air Boats

- **2000 - Up GM EFI engines:**  
Engines equipped with MEFI 1 thru 6 EFI systems  
GM MEFI-1 thru MEFI-4 equipped Adapter #94005  
GM MEFI-5 Adapter #94023 or #94029

### Pleasurecraft Marine

- **1992 - Up EFI engines:**  
1992 - 2006 (GM MEFI equipped) Adapter #94005  
2007 - 2009 (ECM-07 equipped) Adapter #94026  
2008 - Up (ECM-08 equipped) Adapter #94023 or 94029

### Seven Marine

- **2012 - Up Outboard EFI engines:**  
All models Adapter #94023 or #94029

### GM RamJet Crate Engines

- **2000 - Up EFI engines:**  
RamJet 350, RamJet 502 Adapter #94005

### TurnKey Engines

- **2001 - Up MEFI Engines**  
Engines equipped with MEFI 1 thru 6 EFI systems  
GM MEFI-1 thru MEFI-4 equipped Adapter #94005  
GM MEFI-5 Adapter #94023 or #94029

Have Questions?

Please call us at 773-736-6633

**Rinda  
Technologies Inc.**



# DIACOM® Marine Engine Diagnostic Adapters



94005



94020



94028



94006



94021



94029



94011



94023



94037



94013



94024



94038



94014



94026



94039