



Section 6

OMC Stringer Upper Gear Housing Parts 1985 & older

<i>Upper Gear Housing - Applications</i>	60
<i>Upper Gear Housing - Complete</i>	61
<i>Upper Gear Housing - Empty</i>	62
<i>Bearing Retainer - Assemblies</i>	63
<i>Upper Gear Housing - Rebuild Kits</i>	63
<i>Upper Gear Housing - Seal Kits</i>	64
<i>Upper Gear Sets</i>	65
<i>Upper Gear Housing - Breakdown (1973-1985)</i>	66-67
<i>Upper Gear Housing Components</i>	68-69
<i>Drive Shafts</i>	70
<i>Steering Components</i>	71

Stringer

COMPLETE UPPER AND LOWER GEAR HOUSING ASSEMBLY

APPLICATION CHART (1973-1985)

Model	Year	Upper Complete	Upper Housing	Lower Complete	Lower Housing
All 4-Cylinder	1973-1977	27500	27000	-	-
All 4-Cylinder	1978-1985	27500	27000	28830*#	-
V6, 165 HP, 250 CID	1973-1977	27300	27000	-	-
V6 Chevy, 3.8L, 229 CID	1981-1985	27400	27000	28830	28600
V6 Chevy, 4.3L, 262 CID	1985	27300	27000	28830	28600
V6 Chevy, 5.0L, 307 CID	1973-1977	27200	27000	-	-
V6 Chevy, 5.0L, 305 CID	1978-1985	27200	27000	28830*	28600*
V8 Ford, 5.0L, 302 CID	1974-1977	27200	27000	-	-
V8 Chevy, 5.7L, 350 CID	1978-1985	27100	27000	28830*	28600*
V8 Ford, 5.8L, 351 CID	1975-1977	27100	27000	-	-
V8 Ford, 5.8L, 351 CID	1978-1979	27100	27000	28830*	28600*

*The GLM #28830 complete lower gear housing is a direct replacement for the 1981-1985 OMC lower gear housing. The installation of the 1981-1985 ESA (Electronic Shift Assist) components and shift cable are necessary to replace the lower gear housing on the 1978-1980 OMC sterndrives with hydraulic shift.

#The GLM #28830 complete V6/V8 lower gear housing (large diameter) can be used to replace the 1978-1985 four-cylinder lower gear housing (small diameter) if the upper housing gear ratio is changed to 21:20. The installation of the 1981-1985 ESA (Electronic Shift Assist) components and shift cable are necessary to replace the lower gear housing on the 1978-1980 OMC sterndrives with hydraulic shift.

^The GLM #28600 lower housing will not replace the 1978-1980 OMC lower housings with hydraulic shift.



Stringer

COMPLETE UPPER GEAR HOUSING ASSEMBLY (1973-1985)

100% New



Engine	Teeth on Original Gears	GLM No.	OEM No.
4-Cylinder, All	21T/18T	27500	982488
V6, 3.8L, 229 CID	21T/20T	27400	982739
L6, 165 HP	21T/19T	27300	981229
V6, 4.3L, 262 CID	21T/19T	27300	981229
V8 Ford, 5.0L, 302 CID	21T/17T	27200	982487
V8 Chevy, 5.0L, 305 CID	21T/17T	27200	982487
V8 Chevy, 5.7L, 350 CID	21T/16T	27100	982488
V8 Ford, 5.8L, 351 CID	21T/16T	27100	982488

Stringer

UPPER GEAR HOUSING (1973-1985)

No. 27000

OEM: 982226

1973-1985 OMC Empty Gear Housing Ready for Your Components

**Don't scrap a boat because of a corroded upper gear housing!
Replace it with a NEW housing from GLM.**

The GLM #27000 will work on all 1973-1985 OMC sterndrives and will accept the original internal and external OMC components.



Stringer

BEARING RETAINER ASSEMBLIES (1973-1985)

No. 22590 21T/16T

OEM: 982478

No. 22580 21T/17T

OEM: 982477

No. 22567 21T/18T

OEM: 982476

No. 22568 21T/19T

OEM: 984263

No. 22570 21T/20T

OEM: 982738



UPPER GEAR HOUSING REBUILD KIT (1973-1985)

No. 22519 21T/16T

OEM: N/A

No. 22516 21T/17T

OEM: N/A

No. 22537 21T/18T

OEM: N/A

No. 22538 21T/19T

OEM: N/A

No. 22539 21T/20T

OEM: N/A



Stringer

UPPER GEAR HOUSING SEAL KITS

No. 87651

OEM: 981799



For 100 thru 245 (1968-1972)

No. 87650

OEM: 982949



For All Models (1973-1985)

UPPER GEAR HOUSING KITS APPLICATION CHART (1973-1985)

Engine	Teeth on Original Gears	Upper Rebuild Kit	Bearing Retainer Kit	Upper Seal Kit
4-Cylinder, All	21T/18T	22537	22567	87650
V6, 3.8L, 229 CID	21T/20T	22539	22570	87650
L6, 165 HP	21T/19T	22538	22568	87650
V6, 4.3L, 262 CID	21T/19T	22538	22568	87650
V8 Ford, 5.0L, 302 CID	21T/17T	22516	22580	87650
V8 Chevy, 5.0L, 305 CID	21T/17T	22516	22580	87650
V8 Chevy, 5.7L, 350 CID	21T/16T	22519	22590	87650
V8 Ford, 5.8L, 351 CID	21T/16T	22519	22590	87650

Stringer

UPPER GEAR SETS (1973-1985)

GLM is first in the marine industry to have all of the OMC upper housing gear ratios.

Different size engines require different gear ratios in the drive. The manufacturer changes these ratios with different gear sets. The gear ratio change is in the upper gear housing*. All 1973-1985 OMC upper gear housings are identical** except for the tooth count on the gears. Below is a chart showing the tooth count for the different size engines used with OMC sterndrives.



All GLM upper gear sets come with:

GLM No.	OEM No.	Item
21544	382212	Bearing
21545	379585	Bearing
21547	375761	Bearing

Engine	Teeth on Original Gears	GLM No.	OEM No.
4-Cylinder, All	21T/18T	22518	982244
V6, 3.8L, 229 CID	21T/20T	22530	982835
L6, 165 HP	21T/19T	22514	984262
V6, 4.3L, 262 CID	21T/19T	22514	984262
V8 Ford, 5.0L, 302 CID	21T/17T	22512	982259
V8 Chevy, 5.0L, 305 CID	21T/17T	22512	982259
V8 Chevy, 5.7L, 350 CID	21T/16T	22510	982261
V8 Ford, 5.8L, 351 CID	21T/16T	22510	982261

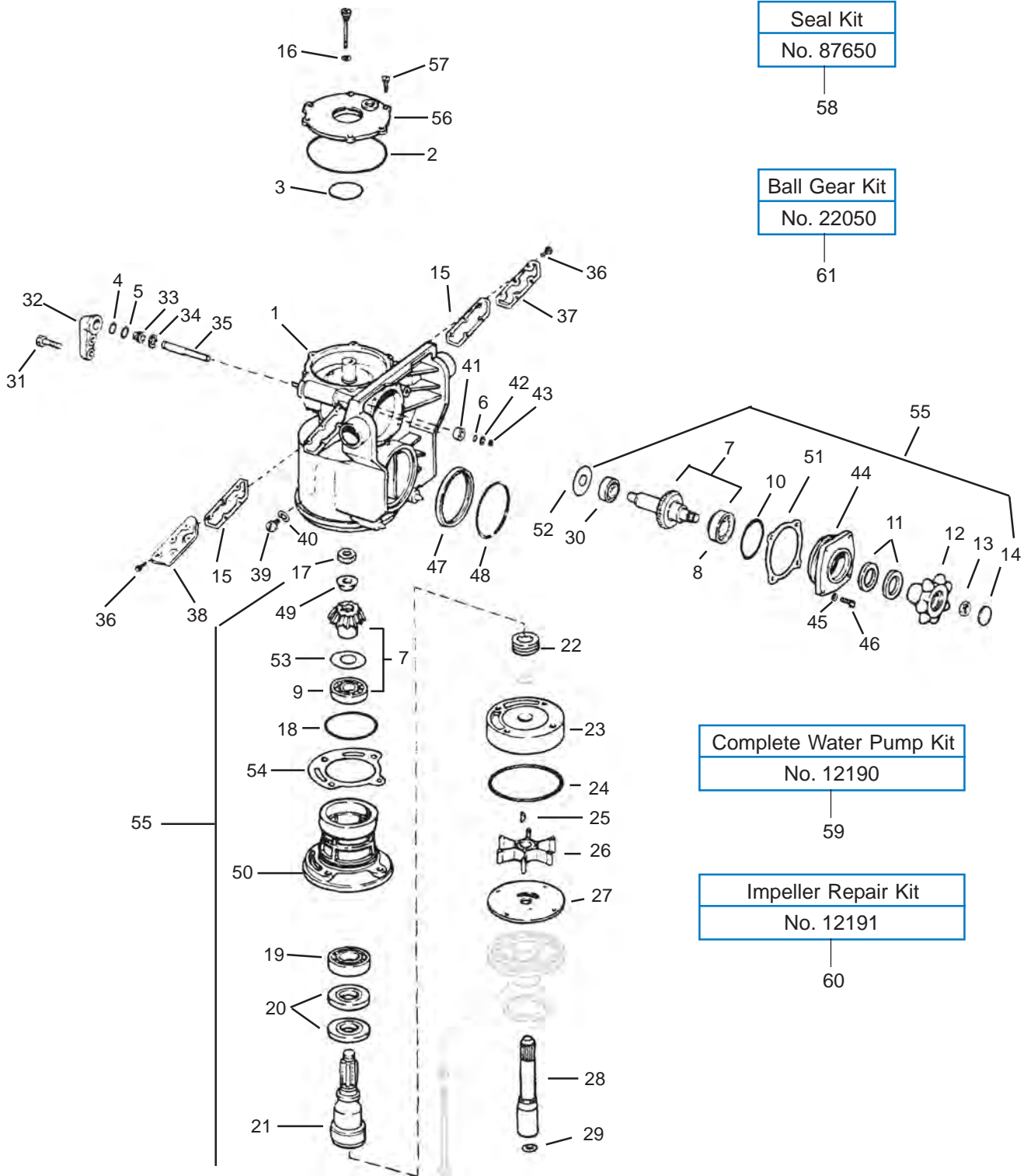
*All lower gear housing ratios are either 2.0:1 for the four-cylinder engines or 1.83:1 for the six and eight-cylinder engines.

The original driven gears in 1973 and 1974 upper gear housings are **not machined for a centering cone. All 1975 and newer driven gears and all GLM replacement driven gears are machined for a centering cone. A new drive shaft with shorter splines and a centering cone must be installed when replacing the original (non-centering cone) driven gear.

Rebuild your OMC powered boat with high quality GLM parts!
GLM is the source for OMC parts!

Stringer

UPPER GEAR HOUSING (1973-1985)



Stringer

UPPER GEAR HOUSING (1973-1985)

GLM No.	Ref No.	OEM No.	Description	GLM No.	Ref No.	OEM No.	Description
27000	1	982226	Upper Gearcase Assembly	27830	43	911317	Retaining Ring
82480	2	313175	O-ring	27960	44	313184	Bearing Retainer
82250	3	310327	O-ring (Electric Shift)	21492	45	302290	Lockwasher
82250	3	910582	O-ring (400-800)	22327	46	909386	Screw
82140	4	302540	O-ring (Early Model)	86652	47	308768	Seal
80230	4	909140	O-ring (Late Model)	11056	48	308590	Spring
42140	5	909139	Quad Ring	22515	49	909123	Centering Cone
41120	6	909048	Quad Ring	27950	50	910240	Bearing Housing
22510	7	982261	Gears 21:16	23312	51	313202	Shim .002
22512	7	982259	Gears 21:17	23313	51	313203	Shim .003
22514	7	984262	Gears 21:19	23314	51	313204	Shim .004
22518	7	982835	Gears 21:18	23315	51	313205	Shim .005
22530	7	982244	Gears 21:20	23316	51	313206	Shim .006
21544	8	382212	Bearing	23323	52	313163	Shim .003
21545	9	379585	Bearing	23324	52	313164	Shim .004
82350	10	308621	O-ring	23325	52	313165	Shim .005
86080	11	981196	Oil Seal	23326	52	313166	Shim .006
22020	12	908069	Ball Gear	23327	52	313167	Shim .007
22330	13	908064	Nut	23328	52	313168	Shim .008
22030	14	908052	Cover	23333	53	313193	Shim .003
34180	15	308592	Gasket	23334	53	313194	Shim .004
33050	16	315189	Gasket	23335	53	313195	Shim .005
22310	17	907866	Lock Nut	23336	53	313196	Shim .006
82360	18	553126	O-ring	23337	53	313197	Shim .007
21546	19	382165	Bearing	23338	53	313198	Shim .008
86090	20	981268	Oil Seal	23339	53	313199	Shim .009
22412	21	909121	Drive Shaft (Low Profile)	23340	53	313200	Shim .010
22422	21	981220	Drive Shaft (High Profile)	23345	54	313185	Shim .005
22423	21	382883	Drive Shaft (High Profile)	23346	54	313186	Shim .006
86100	22	907774	Shaft Seal	23347	54	313187	Shim .007
12390	23	983298	Pump Housing	23348	54	313188	Shim .008
82520	24	910238	O-ring	23349	54	313189	Shim .009
89595	25	308928	Key	23350	54	313190	Shim .010
89760	26	777130	Impeller Pump Plate	22567	55	982476	Bearing Retainer Assy. 2.5/3.0L
12590	27	313176	Pump Plate	22570	55	982738	Bearing Retainer Assy. 3.8L
22410	28	909753	Pump Drive Shaft (Low Profile)	22568	55	984263	Bearing Retainer Assy. 4.3L
22411	28	908087	Pump Drive Shaft (High Profile)	22580	55	982477	Bearing Retainer Assy. 5.0L
80220	29	314491	O-ring	22590	55	982478	Bearing Retainer Assy. 5.7L
21547	30	375761	Bearing	27860	56	313228	Cover
22329	31	305282	Screw	22307	57	909638	Screw
27970	32	908870	Bracket	87650	58	982949	Seal Kit
27990	33	908871	Retainer	12190	59	983218	Complete Water Pump Kit
27840	34	911316	Retainer Ring	12191	60	-	Impeller Repair Kit
27980	35	908890	Spacer Shaft	22050	61	-	Ball Gear Kit
22328	36	3852473	Screw				
28440	37	308699	Water Cover - Stbd.				
28450	38	308591	Water Cover - Port				
21731	39	318544	Screw Set				
31171	40	311598	Gasket				
27820	41	308883	Bushing				
31173	42	314390	Gasket				

Stringer

UPPER GEAR HOUSING COMPONENTS

No. 22050

BALL GEAR KIT

Kit contains:

GLM	OEM	ITEM
82350	308621	O-ring
22030	908062	Cover (2)
22010	908063	Ball Gear
22330	908064	Nut (2)
22020	908069	Ball Gear
81440	908383	O-ring
86010	981195	Seal (2)
86080	981196	Seal (2)



No. 27960

BEARING RETAINER
OEM: 313184



No. 86080

SEAL - BEARING
RETAINER (2)
OEM: 981196



No. 22020

BALL GEAR
OEM: 908069



No. 22330

BALL GEAR NUT
OEM: 908064



No. 21492

LOCKWASHER
OEM: 302290



No. 22327

SCREW
OEM: 909386



No. 22030

BALL GEAR COVER
OEM: 908062



No. 21544

TAPERED ROLLER
BEARING - RETAINER
OEM: 382212



No. 82350

O-RING -
BEARING - RETAINER
OEM: 308621



SHIMS

No. 23312 (.002)

OEM: 313202

No. 23313 (.003)

OEM: 313203

No. 23314 (.004)

OEM: 313204

No. 23315 (.005)

OEM: 313205

No. 23316 (.010)

OEM: 313206

No. 23310

COMPLETE KIT
OEM: N/A

No. 22010

BALL GEAR
OEM: 908063

Intermediate Housing



SHIMS - REAR BEARING

No. 23323 (.003)

OEM: 313163

No. 23324 (.004)

OEM: 313164

No. 23325 (.005)

OEM: 313165

No. 23326 (.006)

OEM: 313166

No. 23327 (.007)

OEM: 313167

No. 23328 (.008)

OEM: 313168

No. 23320

COMPLETE KIT
OEM: 313163



No. 21547

TAPERED ROLLER BEARING
OEM: 375761



Stringer

UPPER GEAR HOUSING COMPONENTS

No. 22310

NUT
OEM: 907866



No. 22515

CENTERING CONE
OEM: 909123



No. 21545

UPPER TAPERED
ROLLER BEARING
OEM: 379585



SHIMS

No. 23333 (.003)

OEM: 313193

No. 23334 (.004)

OEM: 313194

No. 23335 (.005)

OEM: 313195

No. 23336 (.006)

OEM: 313196

No. 23337 (.007)

OEM: 313197

No. 23338 (.008)

OEM: 313198

No. 23339 (.009)

OEM: 313199

No. 23340 (.010)

OEM: 313200

No. 23330

COMPLETE KIT

OEM: N/A



No. 82360

O-RING - BEARING HOUSING
OEM: 553126



SHIMS

No. 23345 (.005)

OEM: 313185

No. 23346 (.006)

OEM: 313186

No. 23347 (.007)

OEM: 313187

No. 23348 (.008)

OEM: 313188

No. 23349 (.009)

OEM: 313189

No. 23350 (.010)

OEM: 313190

No. 27950

BEARING HOUSING
OEM: 910240



No. 21546

LOWER TAPERED
ROLLER BEARING
OEM: 382165



No. 86090

SEAL (2)
OEM: 981268



Stringer

DRIVE SHAFTS (1973-1985)

No. 22412

OEM: 909121

All
(1978-1985)



Low Profile
(1975-1977)

No. 22422

OEM: 981220

Short Spline

Electric Shift
Use WITH centering cone No. 22515



High Profile
(1975-1977)

No. 22423

OEM: 382883

Long Spline

Electric Shift
Use WITHOUT centering cone



High Profile
(1973-1974)

Model	Year	Upper Drive Shaft
All Models High Profile*	1973-1974	22423 Long Shaft
All Models Low Profile*	1973-1974	NLA - Short Shaft
All Models High Profile**	1975-1977	22422 Long Shaft
All Models Low Profile***	1975-1985	22412 Short Shaft

* Starting with model year 1975 all driven gears were machined to accept a centering cone below the drive shaft retaining nut. This centering cone requires a drive shaft with a shorter spline.

Upper gear housings, model year 1973 and 1974, with the original driven gear (no centering cone) require GLM #22423 drive shaft with longer splines. **This drive shaft fits only the high profile gear case.** GLM does not manufacture the drive shaft with longer splines for the low profile gear case.

All 1975 and newer upper gear housings and all older upper gear housings utilizing the new driven gear (with centering cone) will utilize drive shaft GLM #22412 (low profile) or GLM #22422 (high profile).

**The high profile upper gear housing was discontinued for 1978.

***All 1978-1985 upper gear housings are low profile.

Stringer

No.28440

WATER COVER-STBD
OEM: 308699



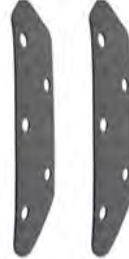
No.28450

WATER COVER -PORT
OEM: 308591



No. 34180

WATER COVER
GASKET (2)
OEM: 308592



No. 22307

SCREW
OEM: 9096381



No. 82250

O-RING
OEM: 910582



No. 22328

SCREW
OEM: 3852473



No. 27860

COVER
OEM: 313228



No. 86652

SEAL
OEM: 308768



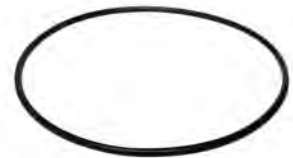
No. 11056

SPRING
OEM: 308590



No. 82480

O-RING - COVER
OEM:313175



STEERING

No. 27970

BRACKET
OEM: 908870



No. 42140

QUAD RING
OEM: 909139



No. 27820

BUSHING
OEM: 308883



No. 27820

BUSHING
OEM: 308883



No. 31173

GASKET
OEM: 314390



No. 80230

O-RING
OEM: 909140



No. 27990

RETAINER
OEM: 908871



No. 27980

SPACER SHAFT
OEM: 908890



No. 41120

QUAD RING
OEM: 909048



No. 27840

RETAINER
OEM: 911316



No. 22329

SCREW
OEM: 305282





Section 7

OMC Stringer Lower Gear Housing Parts 1985 & Older

<i>Upper & Lower Gear Housing - Applications</i>	74
<i>Lower Gear Housing - Complete</i>	75
<i>Lower Gear Housing - Empty</i>	76
<i>Lower Gear Housing - Assembly Kit</i>	77
<i>Lower Gear Housing - Seal Kits</i>	77
<i>Lower Gear Housing - Breakdown (1978-1985)</i>	78-79
<i>Lower Gear Sets</i>	80-83
<i>Lower Gear Housing Components (1978-1985)</i>	84
<i>Prop Shaft Parts - 4-Cyl. w/ Mechanical Shift (1978-1985)</i>	85
<i>Prop Shaft Parts - V6/V8 w/ Mechanical Shift (1978-1985)</i>	85
<i>Lower Gear Housing - 4-Cyl. w/ Mechanical Shift (1978-1985)</i>	86
<i>Lower Gear Housing - V6/V8 w/ Mechanical Shift (1978-1985)</i>	87
<i>Shift Parts</i>	88
<i>Miscellaneous</i>	88
<i>Electric Shift Lower</i>	89

Stringer

COMPLETE UPPER AND LOWER GEAR HOUSING ASSEMBLY

APPLICATION CHART 1973-1985

Model	Year	Upper Complete	Upper Housing	Lower Complete	Lower Housing
4-Cylinder, All	1973-1977	27500	27000	-	-
4-Cylinder, All	1978-1985	27500	27000	28830#	-
L6, 165 HP, 250 CID	1973-1977	27300	27000	-	-
V6 Chevy, 3.8L, 229 CID	1981-1985	27400	27000	28830	28600
V6 Chevy, 4.3L, 262 CID	1985	27300	27000	28830	28600
V8 Chevy, 5.0L, 307 CID	1973-1977	27200	27000	-	-
V8 Chevy, 5.0L, 305 CID	1978-1985	27200	27000	28830*	28600^
V8 Ford, 5.0L, 302 CID	1974-1977	27200	27000	-	-
V8 Chevy, 5.7L, 350 CID	1978-1985	27100	27000	28830*	28600^
V8 Ford, 5.8L, 351 CID	1975-1977	27100	27000	-	-
V8 Ford, 5.8L, 351 CID	1978-1979	27100	27000	28830*	28600^

*The GLM #28830 complete lower gear housing is a direct replacement for the 1981-1985 OMC lower gear housing. The installation of the 1981-1985 ESA (Electronic Shift Assist) components and shift cable are necessary to replace the lower gear housing on the 1978-1980 OMC sterndrives with hydraulic shift.

#The GLM #28830 complete V6/V8 lower gear housing (large diameter) can be used to replace the 1978-1985 four-cylinder lower gear housing (small diameter) if the upper housing gear ratio is changed to 21:20. The installation of the 1981-1985 ESA (Electronic Shift Assist) components and shift cable are necessary to replace the lower gear housing on the 1978-1980 OMC sterndrives with hydraulic shift.

^The GLM #28600 lower housing will not replace the 1978-1980 OMC lower housings with hydraulic shift.

Stringer

COMPLETE LOWER GEAR HOUSING ASSEMBLY - V6 & V8 (1978-1985)

No. 28830

OEM: 987242

Ratio: 12:22

Strongest Lower Gear Housing Assembly in the Marine Industry for 1978-1985* OMC V6 and V8 Sterndrives

☆ Without Shift Assembly ☆



All GLM replacement lower gear housings for the V6 and V8 OMC Stringer sterndrives have the new heavy duty #22666 gear sets. This new gear set has fewer, larger, stronger teeth. The pinion gear has 12 teeth and the forward and reverse gears have 22 teeth. The original OEM gear set has 14 teeth on the pinion and 26 teeth on the forward and reverse gears. During the gear machining process an additional pass is made over each tooth for a finer surface. This makes the gear operation especially quiet. These durable gears are capable of operating with up to 300 horsepower. All GLM lower gear housings have the large 1-1/4 inch diameter prop shafts with a reverse thrust washer installed between the shaft and reverse gear**.

**Many 1978-1980 OMC sterndrives have had the hydraulic shift lower gear housing replaced with the 1981-85 mechanical shift lower gear housing. Sterndrives with the original hydraulic shift lower gear housing do not have an ESA (electronic shift assist) box or overstroke switches on the shift converter. 1978-1980 sterndrives that have been converted to the mechanical shift lower gear housing do/must have the ESA and overstroke switches installed.*

***For model year 1991 OMC increased the prop shaft diameter at the carrier needle bearing (not the prop splines) from 1-3/16 to 1-1/4 inches. The larger prop shaft/needle bearing is a direct replacement into the 1981-1985 lower gear housing and is installed in all GLM lower gear housings.*

Year	Model	Lower Housing	Lower Complete
1981-85	V6, 3.8L	28600	28830
1985	V6, 4.3L	28600	28830
1981-85	V8, 5.0L, 200-230HP	28600	28830
1981-85	V8, 5.7L, 260HP	28600	28830

Stringer

GEAR HOUSING ASSEMBLY (1978-1985)

No. 28600

OEM: 438050

1978-1985 OMC Empty Gear Housing Ready for Your Components

**Don't scrap a boat because of a damaged or corroded lower gear housing!
Replace it with a NEW housing from GLM.**



The GLM #28800 will fit on all 1978 -1985 OMC sterndrives with a V6 or V8 engine and mechanical shift*. It will accept the original internal and external OMC components**.

* Will not fit the 1978-1980 with hydraulic shift.

** Must use the propeller bearing carrier GLM #11406

List of improvements made to the GLM housing:

- **Sand Cast from superior A356T5 Aluminum Alloy**
(Original is Die Cast from inferior A380T6)
- **Mer cruiser style pressed fit pinion needle bearing**
(Original is held in place with a screw)
- **Prop Shaft Carrier is retained with bolts and tabs (1991-1993 Cobra style)**
(1978-1985 carriers are held in place with internal snap rings and 1/4" bolts)
- **Prop Shaft Carrier is prevented from rotating with a key and groove**
- **Water pickup screens are removable with out disassembling the drive.**
(1978-1985 water screens are removed only from the inside of the gear housing)

Stringer

COMPLETE GEAR HOUSING ASSEMBLY KIT

No. 28870

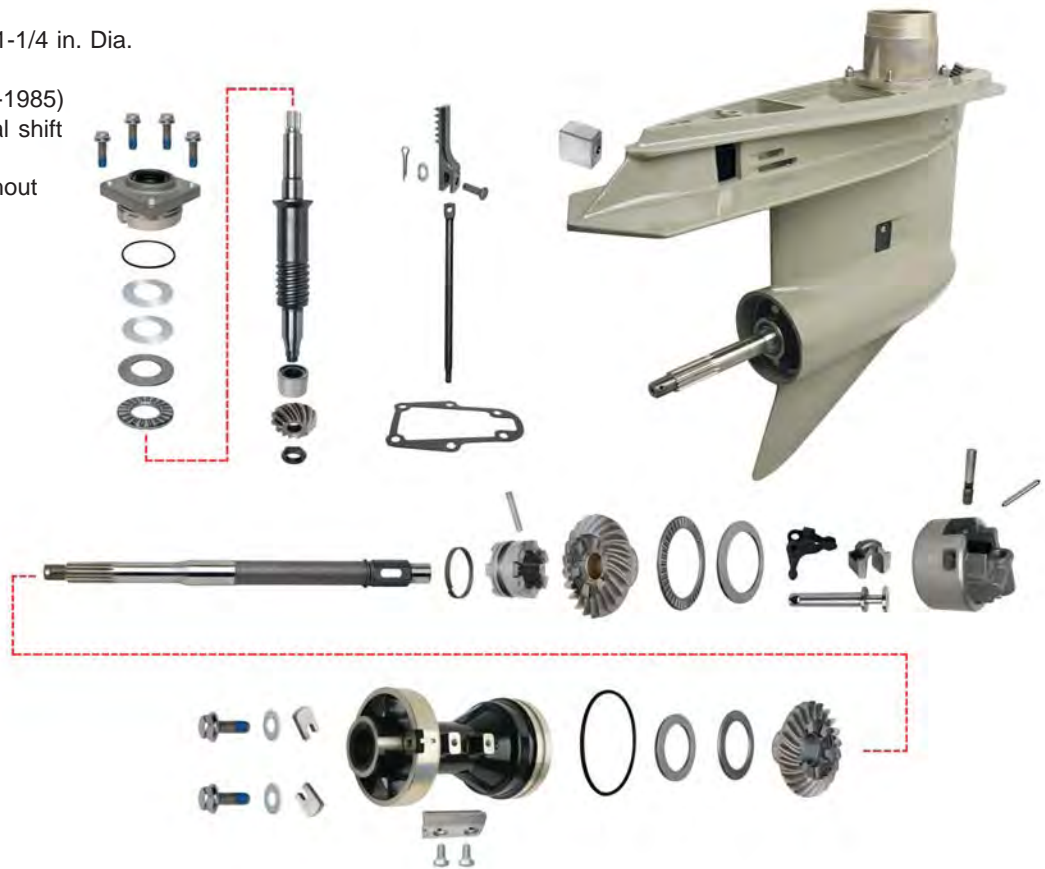
OEM: N/A

1.86 Ratio

All Prop Shaft 1-1/4 in. Dia.

V6 & V8 (1978-1985)
with mechanical shift

*Kit comes without
SHIFT ASSY.



LOWER GEAR HOUSING SEAL KITS

No. 87620

OEM: 981797

(1968-1977)
with electric shift



No. 87630

OEM: 982946

V6 & V8 (1978-1985)
with mechanical shift



No. 87640

OEM: 982947

4-Cyl. (1978-1985)
with mechanical shift



Stringer

LOWER GEAR HOUSING COMPONENTS - WITH MECHANICAL SHIFT (1978-1985)

V6, V8 w/
Mech. Shift
Seal Kit

No. 87630

69

4-Cyl. w/
Mech. Shift
Seal Kit

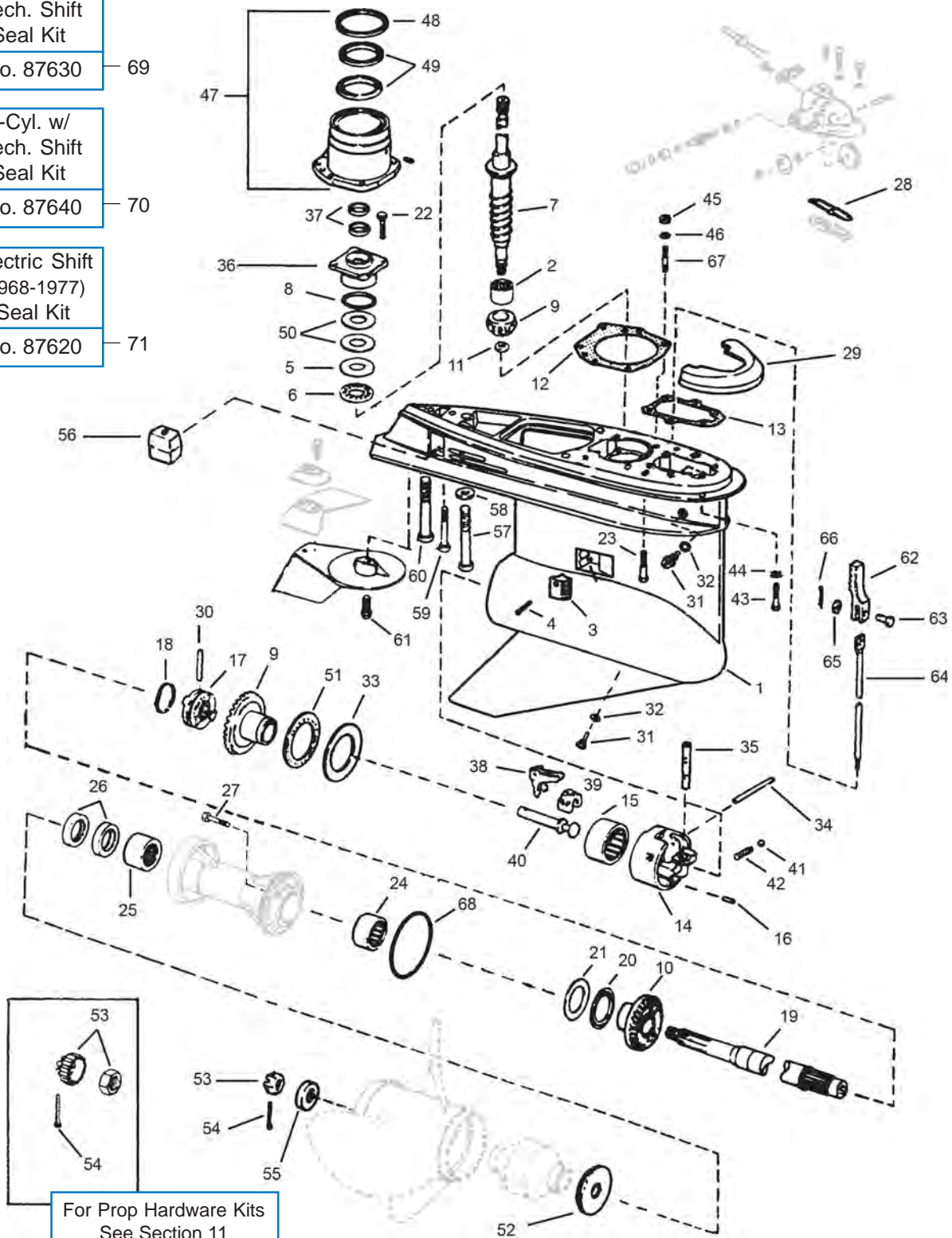
No. 87640

70

Electric Shift
(1968-1977)
Seal Kit

No. 87620

71



Stringer

LOWER GEAR HOUSING COMPONENTS - WITH MECHANICAL SHIFT (1978-1985)

GLM No.	Ref No.	OEM No.	Description	GLM No.	Ref No.	OEM No.	Description
28600	1	438050	Gearcase Assembly	27740	38	322938	Lever
21610	2	387817	Pinion Bearing	27741*	38	324037	Lever 4-Cyl.*
22880*	2	384195	Pinion Bearing 4-Cyl.*	27730	39	982422	Cradle
21885	3	337778	Screen	27710	40	322941	Shaft
22363	4	337061	Screw	22491	41	160084	Detent Ball
21645	5	327656	Thrust Washer	11055	42	911962	Spring
16330	6	387656	Thrust Bearing	22369	43	912127	Screw
22413	7	982424	Drive Shaft	21761	44	328701	Lockwasher
81380	8	314728	O-ring	21180	45	121731	Nut
22623*	9	5004216	P/Forward Gear Set M*	21490	46	305981	Washer
22621*	9	435088	P/Forward Gear Set H*	27780+	47	982439	Swivel Bearing Retainer V6 & V8 +
22631*	9	986979	P/Forward Gear Set 4-Cyl.*	86040	48	310649	Oil Seal
22624	10	910994	Reverse Gear	86050	49	313353	Oil Seal
22632*	10	345992	Reverse Gear 4-Cyl.*	23590	50	323362	Shim .003
22666	9+10	-	Gear Set (Heavy Duty)	23580	50	323361	Shim .004
11190	11	314730	Nut	23510	50	314745	Shim .005
34720	12	910236	Gasket	16340	51	389042	Thrust Bearing
33730*	12	910338	Gasket 4-Cyl.*	16310*	51	385043	Thrust Bearing 4-Cyl.*
33020	13	324670	Gasket	22230*	52	127084	Thrust Washer 4-Cyl.*
27700	14	389455	Housing & Bearing Assembly	22221	52	126870	Thrust Washer
27702*	14	391365	Housing & Bearing Assy. 4-Cyl.*	22150*	53	314503	Nut 4-Cyl.*
22910	15	389039	Bearing	22185	54	398042	Nut & Keeper
22870*	15	382407	Bearing 4-Cyl.*	22120*	54	314502	Cotter Pin 4-Cyl.*
21138	16	331880	Pin	22142	54	306394	Cotter Pin
22625	17	337774	Clutch Dog	22250*	55	315810	Spacer 4-Cyl.*
22633*	17	910578	Clutch Dog 4-Cyl.*	22190	55	320570	Spacer
11052	18	324369	Spring	12776	56	436745	Anode
22414*	19	395209	Prop Shaft M*	22365	57	914535	Screw 7/16 x 3-1/2 -14
22416*	19	436888	Prop Shaft (1976-1986) 4-Cyl.*	21674	58	330265	Washer
16300	20	382408	Thrust Bearing	22366	59	328096	Screw
21642	21	314731	Thrust Washer	22367	60	330263	Screw 3/8 x 3-1/2 -16
22362	22	317624	Screw	22368	61	313715	Screw
22371	23	331999	Screw 3/8 x 1-3/4 -16	27870	62	910311	Rack
22870	24	382407	Bearing	27880	63	910539	Pin
11410	25	387247	Bearing	27890+	64	910309	Shift Rod V6 & V8 +
85130	26	320862	Oil Seal	21678	65	306358	Washer
22300	27	316563	Screw	22145	66	306376	Cotter Pin
34690	28	909604	Gasket	22473	67	910551	Stud
12773	29	983494	Anode	82400	68	305123	O-ring
21135	30	313448	Cross Pin	82370*	68	313446	O-ring 4-Cyl.*
21731	31	318544	Draining Screw	87630	69	982946	Seal Kit V6 & V8 w/ Mech. Shift
31171	32	311598	Gasket	87640	70	982947	Seal Kit 4-Cyl. w/ Mech. Shift
21646	33	327669	Thrust Washer	87620	71	981797	Seal Kit w/ Electric Shift (1968-77)
21644*	33	324766	Thrust Washer 4-Cyl.*	<p>*The 1978-1985 OMC Sterndrives with four-cylinder engines utilize a small diameter lower gear housing.</p> <p>+The 1978-1986 OMC sterndrives with V6 or V8 engines use a large diameter lower gear housing.</p> <p>The lower gear housing parts are interchangeable except where noted with an asterisk or plus sign.</p> <p>M* - Mechanical Shift H* - Hydraulic Shift</p>			
21137	34	328825	Pin				
21135*	34	320145	Pin 4-Cyl.*				
27721	35	910310	Detent				
22730	36	982422	Bearing Housing & Seal				
86060	37	321467	Oil Seal				

Stringer

LOWER GEAR HOUSING GEARS - V6 & V8

HEAVY DUTY

Gear Set GLM #22666

Includes #21651 thrust washer*



When all three gears need replacing in your OMC sterndrive the installation of the GLM #22666 heavy-duty gear set is highly recommended. The heavy-duty gears can be used with all V6 and V8 OMC sterndrives from 1978-1985 with mechanical shift (not 1978-1980 with hydraulic shift).

It is recommended that a new clutch GLM # 22625 (this clutch is not included with the gear set) be installed with the heavy-duty gears.

GLM #22666 heavy-duty gears fit these OMC Sterndrive units:

3.8L/229CI	V6	1981-85
4.3L/262CI	V6	1985
5.0L/305CI	V8	1981-85
5.7L/350CI	V8	1981-85

IMPORTANT NOTE:

The new heavy-duty GLM #22666 gears will not interchange with the standard gears. For individual gear replacement, you must use the standard duty GLM #22623 pinion and forward gears or the GLM #22624 reverse gear.

✓ **STRONGER**

OEM gear sets are machined from 8620 forged steel. The GLM gear set is machined from a higher alloy forged steel. The stronger teeth and higher alloy steel results in a gear that is 50% stronger than any other comparable gear set. These durable gears are capable of operating with up to 300 horsepower.

✓ **MORE DURABLE**

The new GLM gear set has fewer, larger, and stronger teeth. The pinion gear has 12 teeth and the forward and reverse gears have 22 teeth. The original OEM gear set has 14 teeth on the pinion and 26 teeth on the forward and reverse gears.

✓ **QUIETER**

During the gear machining process, an additional pass is made over each tooth for a finer surface. This makes the gear operation especially quiet.

*For model year 1990 OMC increased the prop shaft diameter at the carrier needle bearing (not the prop splines) from 1-3/16 to 1-1/4 inches. Some older gearcases may be fitted with the new large diameter prop shaft. The large diameter prop shaft utilizes a thrust washer (included with this gear set) between the prop shaft and reverse gear. Discard the thrust washer when using the small diameter prop shaft.



Stringer

LOWER GEAR HOUSING GEARS - STANDARD

STANDARD DUTY

Replacement Gear Sets

These gearsets are an exact copy of the gears used in the V6 and V8 OMC Sterndrives from 1978-1985 with mechanical shift* (not 1978-1980 with hydraulic shift).

**Many 1978-1980 OMC hydraulic shift lower gearcases have been replaced with the 1981-85 mechanical shift lower gearcase. 1978-1980 hydraulic shift gear sets are still available, GLM #22620.*



COMPLETE GEAR SET - Forward/Pinion/Reverse - 14/26 teeth - Comes with the GLM #22625 clutch	GLM #22622	OEM N/A
FORWARD & PINION SET - May be used with OMC reverse gear - 14/26 teeth	GLM #22623	OEM #5004216
REVERSE GEAR - May be used with OMC forward and pinion gears - 26 teeth - Includes thrust washer #21651**	GLM #22624	OEM #910994
CLUTCH	GLM #22625	OEM #337774

***For model year 1990 OMC increased the prop shaft diameter at the carrier needle bearing (not the prop splines) from 1-3/16 to 1-1/4 inches. Some older gearcases may be fitted with the new large diameter prop shaft. The large diameter prop shaft utilizes a thrust washer (included with this gear set) between the prop shaft and reverse gear. Discard the thrust washer when using the small diameter prop shaft.*

It is recommended that the above standard duty replacement gears be used only with V6 powered sterndrives listed below:

3.8L/229CI	V6	Chev.	1981-85
4.3L/262CI	V6	Chev.	1985

GLM recommends the heavy-duty gearset #22666 for all V8 powered sterndrives.

Stringer

LOWER GEAR HOUSING GEARS - 4 CYLINDER

4-CYLINDER GEARS

These gearsets are an exact copy of the gears used in the 4-Cylinder OMC Sterndrives from 1978-1985 with mechanical shift (not 1978-1980 with hydraulic shift).



#22631
Forward & Pinion Set

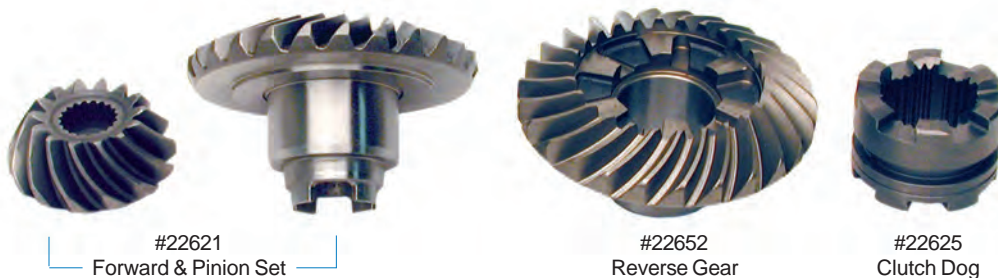
#22632
Reverse Gear

#22633
Clutch Dog

COMPLETE GEAR SET - Forward/Pinion/Reverse - 13/26 teeth - Comes with the GLM #22633 clutch	GLM #22630	OEM N/A
FORWARD & PINION SET - May be used with OMC reverse gear - 13/26 teeth	GLM #22631	OEM #986979
REVERSE GEAR - May be used with OMC forward and pinion gears - 26 teeth	GLM #22632	OEM #345992
CLUTCH	GLM #22633	OEM #910578

Stringer

LOWER GEAR HOUSING GEARS - V6 MECHANICAL / HYDRAULIC SHIFT



COMPLETE GEAR SET - Forward/Pinion/Reverse - 14/26 teeth - Comes with the GLM #22625 clutch	GLM #22620	OEM N/A
FORWARD & PINION SET - 14/26 teeth	GLM #22621	OEM #5004941
REVERSE GEAR & CLUTCH - 26 teeth	GLM #22652	OEM #437297
CLUTCH	GLM #22625	OEM #337774, 914716, 915272

LOWER GEAR HOUSING GEARS APPLICATION GUIDE

Model	Year	Lower Drive Shaft	Prop Shaft	Pinion/Fwd Gear Set	Reverse Gear	Clutch Dog	Complete Set w/ Clutch Dog
HYDRAULIC SHIFT (1978-1980)							
120/140	1978-1980	-	-	-	-	22633	-
185/225	1978-1980	22413	-	22621	22624	22625	22620
240/250 Ford	1978-1979	22413	-	22621	22624	22625	22620
200/230/260	1978-1980	22413	-	22621	22624	22625	22620
MECHANICAL SHIFT (1981-1985)							
120/2.5	1981-1985	-	22416	22631	22632	22633	22630
140/3.0	1981-1985	-	22416	22631	22632	22633	22630
3.8	1981-1985	22413	22414	22666*		22625	-
3.8	1981-1985	22413	22414	22623	22624	22625	22622
4.3	1985	22413	22414	22666*		22625	-
4.3	1985	22413	22414	22623	22624	22625	22622
200/230/260	1981	22413	22414	22666*		22625	-
5.0/5.7	1982-1985	22413	22414	22666*		22625	-

* Heavy Duty Gear Set

For the 1978 model year the OMC stringer sterndrive was redesigned, the old electric shift lower gear housing was replaced with this new hydraulic shift assist, large diameter, V6 gear housing. The hydraulic shift assist lower gear housing did not prove to be reliable and was replaced with a mechanical shift lower gear housing on the 1979 and newer V6 outboards and the 1981 and newer OMC sterndrives. OMC made available to owners of 1978-1980 sterndrives a mechanical shift lower gear housing conversion kit for a very low price. This kit consisted of a complete lower gear housing, an ESA (electronic shift assist) box, ESA activation switch and two shift overstroke switches.

It is the customer's responsibility to determine if a 1978-1980 OMC sterndrive has the original hydraulic shift assist lower gear housing or has been converted to the mechanical shift lower gear housing.

Stringer

LOWER GEAR HOUSING COMPONENTS (1978-1985)

No. 86040

OIL SEAL - SWIVEL BEARING
RETAINER
OEM: 310649



No. 86050

OIL SEAL - SWIVEL BEARING
RETAINER
OEM: 313353



No. 27780

SWIVEL BEARING RETAINER - V6 & V8
OEM: 982439



No. 34720

GASKET - V6 & V8
OEM: 910236



No. 33730

GASKET - 4 CYL
OEM: 910338



No. 86060

OIL SEAL (2)
OEM: 321467



No. 22362

SCREW
OEM: 317624



No. 22730

BEARING HOUSING & SEAL
OEM: 982422



No. 81380

O-RING
OEM: 314728



No. 23590

SHIM 0.003"
OEM: 323362



No. 23580

SHIM 0.004"
OEM: 323361



No. 23510

SHIM 0.005"
OEM: 314745



No. 21645

THRUST WASHER
OEM: 327656



No. 16330

THRUST BEARING
OEM: 387656



No. 22413

DRIVE SHAFT - V6 & V8
OEM: 982424



No. 21610

PINION BEARING - V6 & V8
OEM: 387817

No. 22860

PINION BEARING - 4 CYL
OEM: 379504



No. 11190

NUT
OEM: 314730



Stringer

PROP SHAFT PARTS - 4-CYL W/MECHANICAL SHIFT (1978-1985)

No. 86030

OIL SEAL - PROP SHAFT (2)
OEM: 330137



No. 22860

BEARING - PROP SHAFT
OEM: 379504



No. 22416

PROP SHAFT
OEM: 436888



No. 22870

REVERSE GEAR -
BEARING CARRIER
OEM: 382407



No. 21642

THRUST WASHER -
REVERSE GEAR
OEM: 314731



No. 16300

THRUST BEARING -
REVERSE GEAR
OEM: 382408



No. 82370

O-RING - CARRIER
OEM: 313446



PROP SHAFT PARTS - V6 & V8 W/MECHANICAL SHIFT (1978-1985)

No. 85130

OIL SEAL - PROP SHAFT (2)
OEM: 320862



No. 11410

BEARING - PROP SHAFT
OEM: 387247



No. 22414

PROP SHAFT
OEM: 395209



No. 22870

REVERSE GEAR -
BEARING CARRIER
OEM: 382407



No. 21642

THRUST WASHER -
REVERSE GEAR
OEM: 314731



No. 16300

THRUST BEARING -
REVERSE GEAR
OEM: 382408



No. 82400

O-RING - CARRIER
OEM: 305123



Stringer

LOWER GEAR HOUSING - 4-CYL. W/MECHANICAL SHIFT (1978-1985)

No. 11052
SPRING
OEM: 324369



No. 21135
CROSS PIN
OEM: 313448



No. 22633
CLUTCH DOG
OEM: 910578



No. 16310
THRUST BEARING -
FORWARD GEAR
OEM: 385043



No. 21644
THRUST WASHER -
FORWARD GEAR
OEM: 324766



No. 21135
PIN
OEM: 313448



No. 27741
LEVER
OEM: 324037



No. 27721
DETENT
OEM: 910310



No. 27710
SHAFT
OEM: 322941



No. 27730
CRADLE
OEM: 982422



No. 28483
SHAFT & BEARING HSG KIT
OEM: N/A



No. 22870
BEARING
OEM: 382407



No. 27702
HOUSING &
BEARING ASSY
OEM: 391365



Stringer

LOWER GEAR HOUSING - V6 & V8 W/MECHANICAL SHIFT (1978-1985)

No. 11052
SPRING
OEM: 324369



No. 21135
CROSS PIN
OEM: 313448



No. 22625
CLUTCH DOG
OEM: 337774



No. 16340
THRUST BEARING -
FORWARD GEAR
OEM: 389042



No. 21646
THRUST WASHER -
FORWARD GEAR
OEM: 327669



No. 21137
PIN
OEM: 328825



No. 27740
LEVER
OEM: 322938



No. 27721
DETENT
OEM: 910310



No. 27710
SHAFT
OEM: 322941



No. 27730
CRADLE
OEM: 982422



No. 28480
SHAFT & BEARING HSG KIT
OEM: N/A



No. 22910
BEARING
OEM: 389039



No. 27700
HOUSING &
BEARING ASSY
OEM: 389455



Stringer

SHIFT PARTS

No. 34690

GASKET
OEM: 909604



Shift Housing Cover

No. 33960

GASKET
OEM: 911878



Shift Housing

No. 27870

RACK
OEM: 910311



No. 27880

PIN
OEM: 910539



No. 22145

COTTER PIN
OEM: 306376



No. 27890

SHIFT ROD - V6 & V8
OEM: 910309



MISCELLANEOUS

No. 23112

TRIM TAB V6 & V8
OEM: 912392



No. 21731

SCREW SET
OEM: 318544



No. 22368

SCREW
OEM: 313715



No. 31171

GASKET
OEM: 311598



Stringer

ELECTRIC SHIFT LOWER

No. 22310

PINION NUT
OEM: 907866



No. 86040

OIL SEAL - SWIVEL BEARING RETAINER
OEM: 310649



No. 86050

OIL SEAL - SWIVEL BEARING RETAINER (2)
OEM: 313353



No. 27782

SWIVEL BEARING RETAINER
OEM: 980014



No. 33010

GASKET
OEM: 313368



WATER TUBE GROMMETS

No. 86320

OEM: 310597



4-Cyl.
Lower Grommet

No. 86330

OEM: 908594



All
Upper Grommet

No. 86340

OEM: 909019



6 & 8-Cyl.
Lower Grommet

No. 85110

OIL SEAL - PROP SHAFT (2)
OEM: 310599



No. 27931

SHIFT CABLE ASSEMBLY
OEM: 379628



Electric Shift



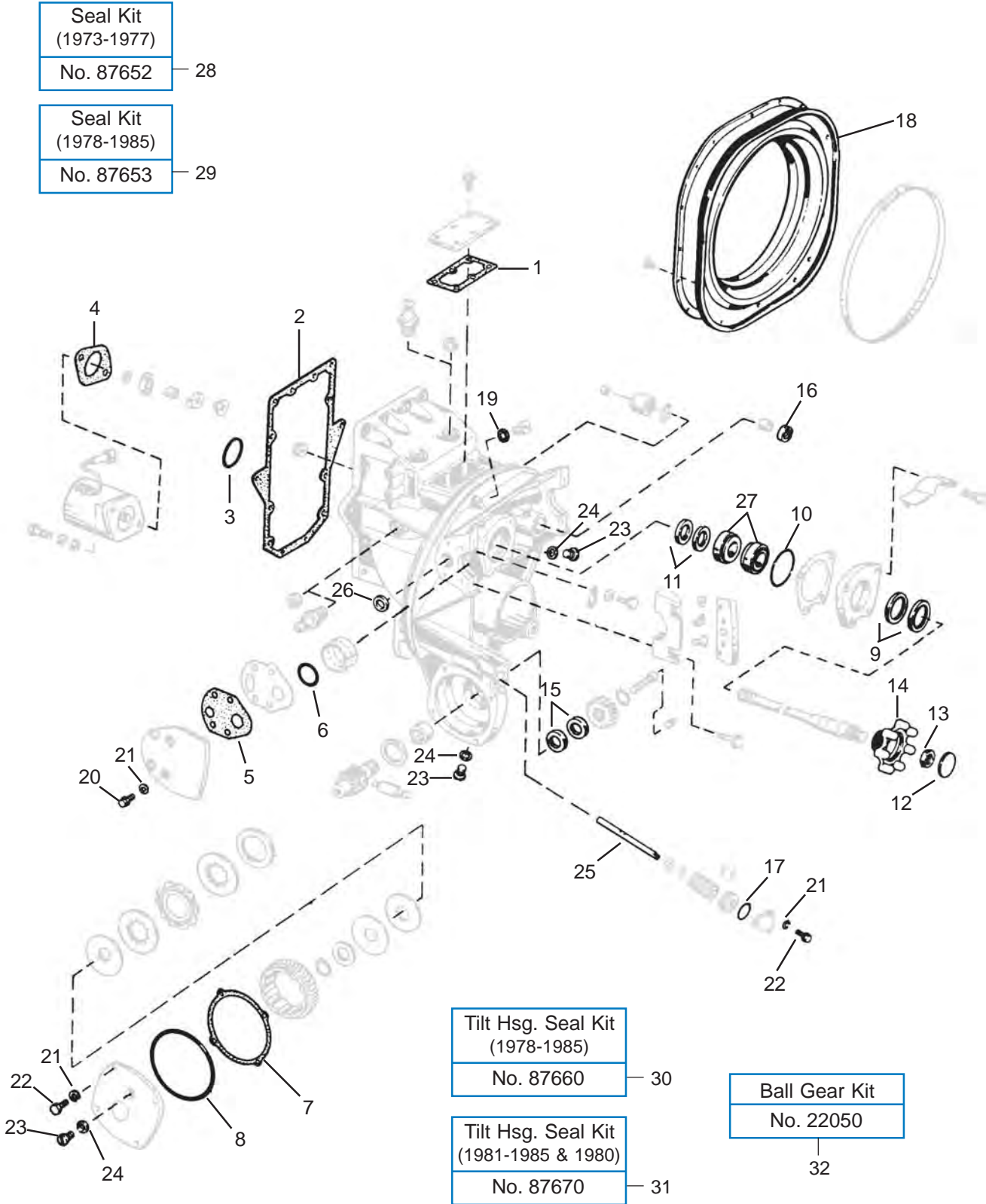
Section 8

OMC Stringer Intermediate Housing Parts 1985 & Older

<i>Intermediate Housing - Breakdown</i>	92-93
<i>Intermediate Housing - Seal Kit</i>	94
<i>Tilt Housing - Seal Kit</i>	94
<i>Drive Installation Kits</i>	94
<i>Tilt Shaft</i>	95
<i>Ball Gears, Bearings, Seals</i>	95
<i>Transom Boot/Seal</i>	96

Stringer

INTERMEDIATE HOUSING



Stringer

INTERMEDIATE GEAR HOUSING SEAL KITS

No. 87652

OEM: 981801



For All Models (1973-1977)

No. 87653

OEM: 982948



For All Models (1978-1985)

TILT HOUSING SEAL KITS

No. 87660

OEM: N/A

STRINGER MOUNT
Before 1980

Kit contains:

GLM	OEM	Item	Qty.
82140	302540	O-Ring	1
33060	308799	Gasket	1
31171	311598	Washer	2
81550	908194	O-Ring	1
86070	911019	Seal	1



No. 87670

OEM: N/A

STRINGER MOUNT
1981-1985 & 1980
K & U Suffix Model

Kit contains:

GLM	OEM	Item	Qty.
82140	302540	O-Ring	1
81550	908194	O-Ring	1
33060	308799	Gasket	1
31171	311598	Gasket	2
86060	321467	Seal	2



DRIVE INSTALLATION KITS

No. 34820

OEM: N/A

STRINGER MOUNT
Electric Shift
Stringer
(1971-1977)

Kit contains:

GLM	OEM	Item	Qty.
33480	316499	Gasket	2
81270	308626	O-Ring	2
34750	313244	Gasket	2



No. 34810

OEM: N/A

STRINGER MOUNT
Mechanical Shift
Stringer
(1978-1985)

Kit contains:

GLM	OEM	Item	Qty.
33470	909529	Gasket	2
81270	308626	O-Ring	2
34750	313244	Gasket	2



Stringer

INTERMEDIATE HOUSING

No. 34230

GASKET - TILT MOTOR
OEM: 311508

(1967-1976)



No. 22040

TILT WORM SHAFT
OEM: 980183



No. 82140

O-RING - TILT SHAFT COVER
OEM: 302540



No. 33950

GASKET - TILT MOTOR
OEM: 909902

(1980-1985)



No. 21492

LOCKWASHER
OEM: 302290



No. 22327

SCREW - TILT SHAFT COVER
OEM: 909386



No. 33060

GASKET - TILT
CLUTCH COVER
OEM: 308799



No. 81550

O-RING - TILT
CLUTCH COVER
OEM: 908194



No. 86070

OIL SEAL - TILT
CLUTCH SHAFT
OEM: 911019

(1971-
1979)



No. 86060

OIL SEAL - TILT
CLUTCH SHAFT (2)
OEM: 321467

(1980-
1985)



INTERMEDIATE HOUSING - DRIVE SHAFT ASSEMBLY

No. 85010

OIL SEAL -
SHAFT INNER
OEM: 313992



No. 21512

BEARING - SHAFT
OEM: 3854250



No. 86010

OIL SEAL -
SHAFT OUTER
OEM: 981195



No. 22010

BALL GEAR -
INTERMEDIATE HSG.
OEM: 908063



No. 22030

BALL GEAR
COVER
OEM: 908062



No. 81440

O-RING - BEARING RETAINER
OEM: 908383



No. 22330

BALL GEAR NUT
OEM: 908064



No. 22050

BALL GEAR KIT
OEM: N/A

Kit contains:

GLM	OEM	ITEM
82350	308621	O-ring
22030	908062	Cover (2)
22010	908063	Ball Gear
22330	908064	Nut (2)
22020	908069	Ball Gear
81440	908383	O-ring
86010	981195	Seal (2)
86080	981196	Seal (2)



Stringer

INTERMEDIATE HOUSING PARTS

No. 33470

GASKET -
SIDE COVER
OEM: 909529

(1978-1985)



No. 33480

GASKET -
SIDE COVER
OEM: 316499

(1971-1977)



No. 34750

CORK SEAL -
SIDE COVER
OEM: 313244



No. 81270

O-RING -
SIDE COVER
OEM: 308626



No. 21492

SIDE COVER SCREW
LOCKWASHER
OEM: 302290



No. 22325

SCREW -
SIDE COVER
OEM: 909533

No. 34760

OIL RESERVOIR GASKET
OEM: 313246



No. 33900

ENGINE BELL HOUSING GASKET
OEM: 909515



No. 86590

STEERING SHAFT SEAL
OEM: 908855



No. 21731

SCREW SET - FILL PLUG
OEM: 318544



No. 31171

GASKET
OEM: 311598



No. 33050

RUBBER GASKET - LARGE DRAIN PLUG
OEM: 315189



No. 82260

O-RING - INTERMEDIATE HOUSING
BELL HOUSING
OEM: 315189



TRANSOM SEALS

No. 86700

OEM: 313080

Electric Shift
Stringer
(1967-1977)



Has 16 Screw Holes

No. 86710

OEM: 909527

Mechanical Shift
Stringer
(1978-1986)



Has 22 Screw Holes